

**KTM**  
**PRO-XP**

# NORTH EAST ADVENTURE TOUR

TOUR THE MYSTICAL REALM



**23<sup>rd</sup> SEP - 4<sup>th</sup> OCT**

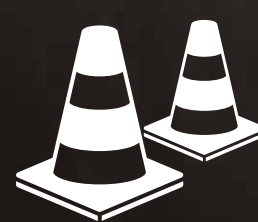
TOUR HIGHLIGHTS



**UNEXPLORED  
TERRAINS**



Explore **ZIRO VALLEY**  
- **UNESCO WORLD  
HERITAGE SITE**



High Altitude  
**ADVENTURE  
ACADEMY**



Led by  
**KTM EXPERTS**

# NORTH EAST ADVENTURE, THE KTM WAY:

Embark on an extraordinary and rare adventure with the KTM PRO-XP North East journey, tailor-made for thrill-seeking motorcyclists and more. Discover meticulously planned routes led by experienced KTM experts, who will guide you toward becoming an accomplished adventurer while honing your skills to perfection. Spanning 11 consecutive days, this exhilarating ride will take you through high-altitude challenges, formidable terrains, and unexpected surprises, keeping you engaged and enthusiastic as you progress and grow into a seasoned professional by the journey's end.



ENTER THE MYSTICAL REALM

# NORTH EAST ADVENTURE TOUR



# WHAT TO EXPECT

1  
DAY



## DAY 1: ARRIVAL IN GUWAHATI

The adventure commences as we reach **Guwahati** on the tour's first day. Our KTM Team will thoroughly **inspect** the motorcycles and **riding gear**. The KTM experts will then provide a briefing on the route, terrains, riding safety measures, along with essential dos and don'ts.

2  
DAY



## DAY 2: GUWAHATI TO DIRANG

Highest Altitude reached: **5148 ft**

Distance covered: **315 km** approx.

Duration: **9 hrs**

On Day 2, we ride 152 km to **Balemu**, Arunachal Pradesh's border, and continue with an adrenaline-filled 158 km journey to **Dirang**. A delightful lunch in **Shergaon** adds to the adventure, guided by the KTM Team and surrounded by stunning landscapes.



3  
DAY



### DAY 3: DIRANG- TAWANG

Highest Altitude reached: **10058 ft**

Distance covered: **138 km** approx.

Duration: **5 hrs**

On the 3rd day of our adventure, we begin our journey towards the captivating Sangti Valley. After a brief visit to the charming **Monpa** village in Sangti, we set off for the next part of our ride to **Tawang**. The route takes us across the majestic Sela Pass, standing tall at an elevation of 13,681 feet. By evening, we arrive at our destination, **Tawang**, where the day's exciting expedition comes to a fulfilling end.

4  
DAY



### DAY 4: TAWANG- ZIMITHANG

Highest Altitude reached: **10058 ft**

Distance covered: **200 km** approx.

Duration: **9 hrs**

Day 4 presents an exhilarating **Tawang** loop, encompassing high mountain lakes, lush grasslands, and valleys. The day's highlight is the adventurous **KTM academy** near **Sangestar Lake**, adding excitement to our journey through the stunning landscapes of **Tawang**. Unforgettable memories await.



**5**  
DAY



### **DAY 5: TAWANG - BUM LA PASS - TAWANG**

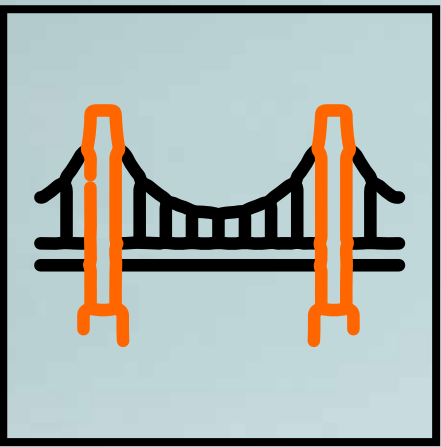
Highest Altitude reached: **10058 - 15289 ft**

Distance covered: **130 km** approx.

Duration: **3 hrs**

The 5th Day of the tour commences with a ride to **Bum La Pass**, the tour's highest point and the international border between India and China. By noon, we arrive back in Tawang, where we can either take some well-deserved rest or explore the captivating **Tawang Monastery**, making the most of the day's experiences and opportunities for discovery.

**6**  
DAY



### **DAY 6 : TAWANG - BOMDILA**

Highest Altitude reached: **10058 ft**

Distance covered: **138 km** approx.

Duration: **6 hrs**

The day begins with an exciting ride to the scenic **Kipti Village**, known as the rice bowl of Tawang. Next, we visit the impressive **Chag-zam-iron-bridge** before embarking on a thrilling journey across the majestic **Sela Pass**. As we descend to Dirang, the picturesque landscapes continue to captivate us. Finally, we conclude the day's adventure with a restful overnight stay in the charming town of **Bomdila**.



**7**  
DAY



### **DAY 7 : BOMDILA - SEPPA**

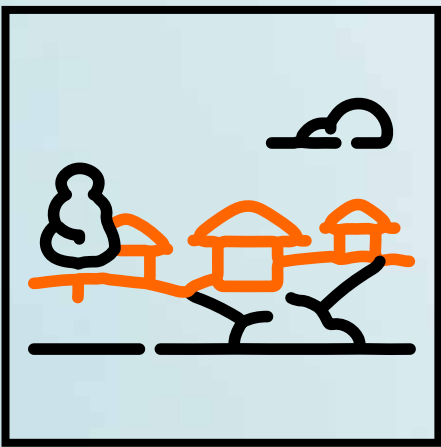
Highest Altitude reached: **1198 ft**

Distance covered: **142 km** approx.

Duration: **5 hrs** approx.

Day 7 takes us on a captivating ride through Arunachal's largest military cantonment area, the **Tenga Valley**, while crossing the scenic **Nichiphu Pass**. The journey is filled with awe-inspiring views as we make our way to our final destination, **Seppa**. The day's adventures culminate in this charming location, offering a perfect ending to another unforgettable day on our thrilling North East journey.

**8**  
DAY



### **DAY 8 : SEPPA - ZIRO**

Highest Altitude reached: **4950 ft**

Distance covered: **250 km** approx.

Duration: **7 TO 8 hrs** approx.

Day 8 begins with an early start from **Seppa** as we embark on an adventurous ride to the breathtaking **Ziro Valley**. Our route takes us through the enchanting **Lumdang Village** before crossing the **Papu Valley** and the meandering **Serpentine river**. The day's ride concludes as we reach Ziro, where we rest and rejuvenate at a comfortable hotel.



9  
DAY

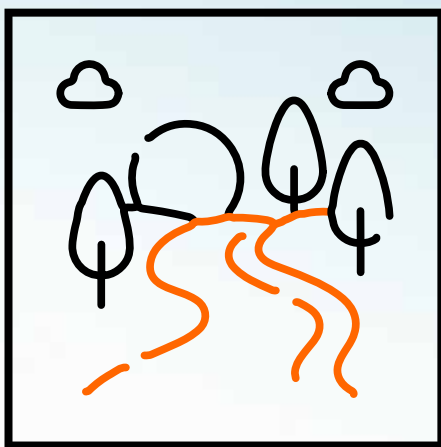


### DAY 9 : ZIRO

Highest Altitude reached: **4950 ft**

Day of the tour, we delve into the **UNESCO World Heritage site of Ziro Valley**. Our exploration includes visits to **Hong, Hari, and Hija Villages**, immersing in their cultural heritage and scenic beauty. A day filled with enriching experiences and unforgettable moments awaits us on this remarkable journey.

10  
DAY



### DAY 10 : ZIRO - MAJULI

Highest Altitude reached: **277 ft**

Distance covered: **155 km** approx.

Duration: **5 hrs** approx.

Day 10 marks our farewell to the captivating landscapes of **Arunachal Pradesh** as we ride down to the plains of Assam. Our destination is **Dhungauri Ghat**, where we embark on a unique experience by taking a country-made boat to cross the mighty **Brahmaputra River** and reach the enchanting island of **Majuli**. Here, we rest for the night at a comfortable guest house, cherishing the memories of our incredible journey.





11  
DAY



### DAY 11 : MAJULI - GUWAHATI

Highest Altitude reached: **132 ft**

Distance covered: **367 km** approx.

Duration: **9 hrs** approx.

On this leg of our journey, we ride to **Kamalbari Ghat**, passing through the **Kamalbari Satra** and **Auniati Satra**, experiencing the region's cultural richness. We ferry across the majestic Brahmaputra to reach **Nimati Ghat** in Jorhat. From there, we continue our ride to **Guwahati**, where our adventure culminates with a special certification ceremony, celebrating our transformation into accomplished adventurers.

12  
DAY



### DAY 12 : GUWAHATI - HOMETOWN

On the last day of our tour, we commence the journey back to our hometown from **Guwahati**, with hearts filled with cherished memories, unforgettable conversations, and treasured pictures that will forever remind us of the extraordinary North East adventure with KTM PRO-XP. As we bid farewell to this remarkable journey.





**TO KNOW MORE, CLICK RELEVANT LINKS**

1. Inclusions & Exclusions
2. Rules & Guidelines
3. Things to carry
4. How to prepare your bike
5. Recommended gear
6. Terms & Conditions

**BOOK NOW**